

Ultraflo's Easy to Install *Stand-alone Stem Extension*

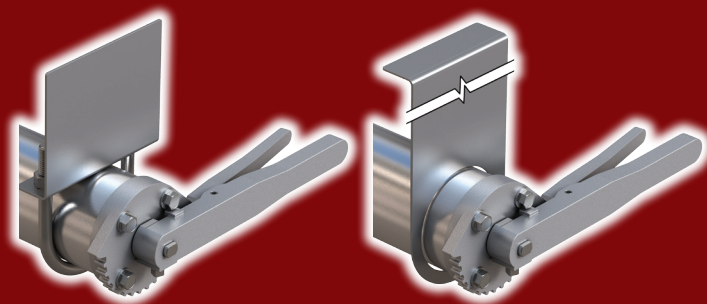
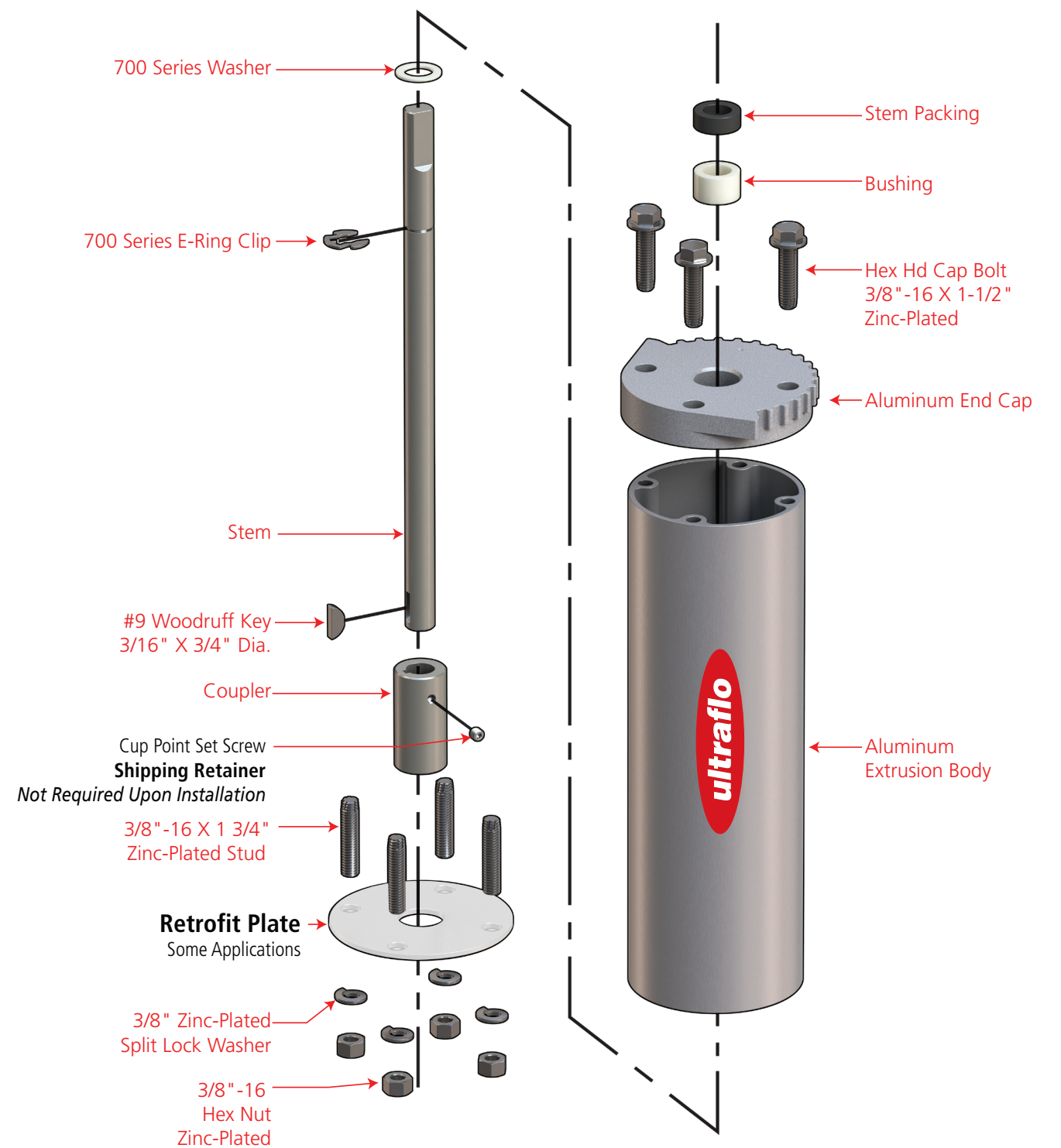


**The most cost effective
solution on the market
from *Ultraflo***

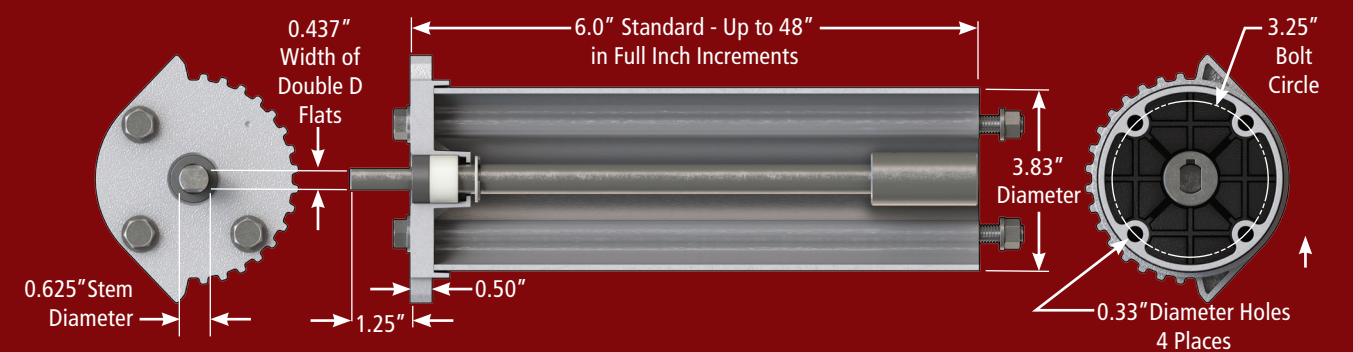


ultraflo

Ultraflo Corporation
A Subsidiary of Bray International, Inc.



**Bracing recommended
for extensions 12" and longer**



Standard Stem Extension Assembly Part #'S Are SE02T-XXX

And SE03T-XXX Where "XX" Designates The Length In Inches.

See Below Fitment Guide To Determine Whether SE02 Or SE03 Extensions Are Required

BRACING IS RECOMMENDED FOR LENGTHS OF 12" AND GREATER

EXTENSION FITMENT GUIDE

Valve Size	Ultraflo			BTI	Sure Seal	
	780	400/480	390/380		500	890
3"	SE02T-XXX	N/A	N/A	SE02T-XXX/ SE02T-RFPL	N/A	N/A
4"	SE02T-XXX	SE02T-XXX	SE02T-XXX	SE03T-XXX/ SE02T-RFPL	SE02T-XXX	SE02T-XXX
5"	SE02T-XXX	SE02T-XXX	SE02T-XXX	SE03T-XXX/ SE02T-RFPL	SE02T-XXX	SE02T-XXX
6"	SE02T-XXX	SE02T-XXX	SE03T-XXX	SE03T-XXX/ SE02T-RFPL	SE02T-XXX	SE03T-XXX

*** SE02T-RFPL is required for mounting to BTI valves**

Stem extensions can be customized to any length (up to 48") in full inch increments.

Lengths outside the above guidelines are available, consult factory for more information.



Ultraflo Corporation
A Subsidiary of Bray International, Inc.

8 Trautman Industrial Drive, Ste. Genevieve, Missouri 63670
800.950.1762 • Fax: 573.883.8882
www.ultraflovalve.com